

COLLECTION 2025

Creative Exploration Across Dimensions



The Creative Division of **Werbeagentur dmp**

agentur-dmp.de • artmis.info



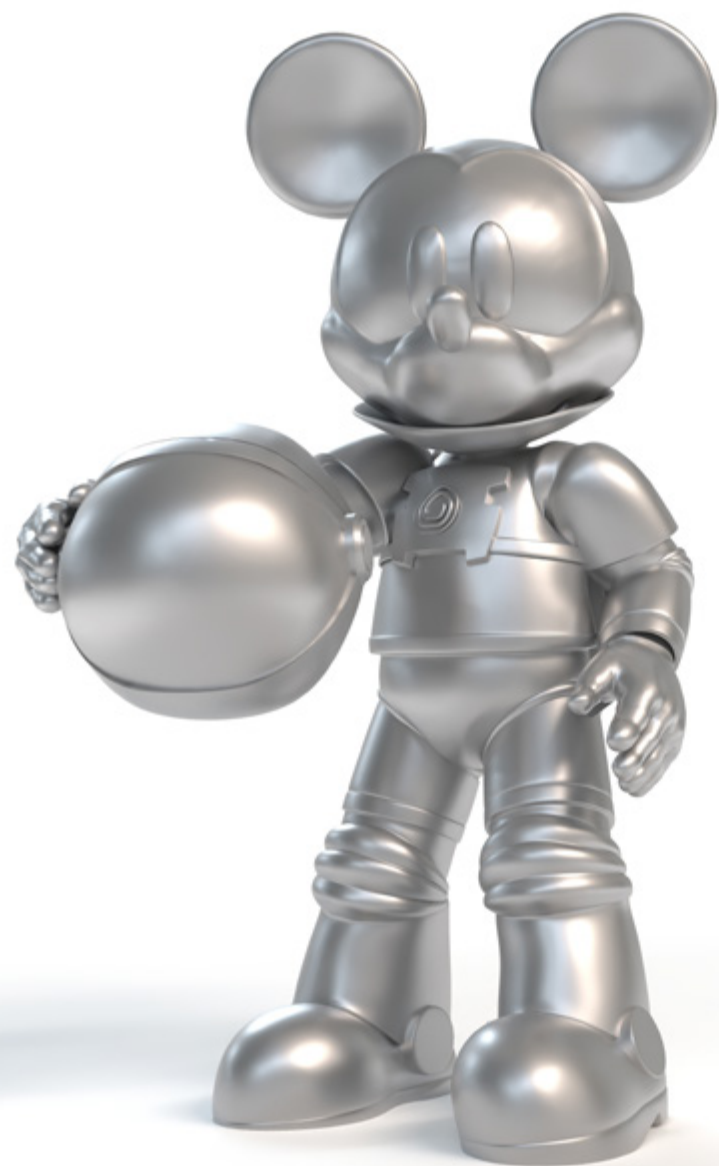




SCAN OR CLICK ME
& PLACE IT!



SCAN OR CLICK ME
& PLACE IT!



SCAN OR CLICK ME
& PLACE IT!



SCAN OR CLICK ME
& PLACE IT!



SCAN OR CLICK ME
& PLACE IT!



SCAN OR CLICK ME
& PLACE IT!

THE RISE OF AI

AI ART MEETS LAW When art and artificial intelligence enter the world of law, unexpected beauty emerges. For Knyrim Trieb Rechtsanwälte OG, our creative division Artmis was invited to design a series of AI-generated artworks that enrich the firm's office space. The project explores how machine intelligence and human creativity can coexist – translating complex themes like data protection, AI ethics, and copyright into visual form.

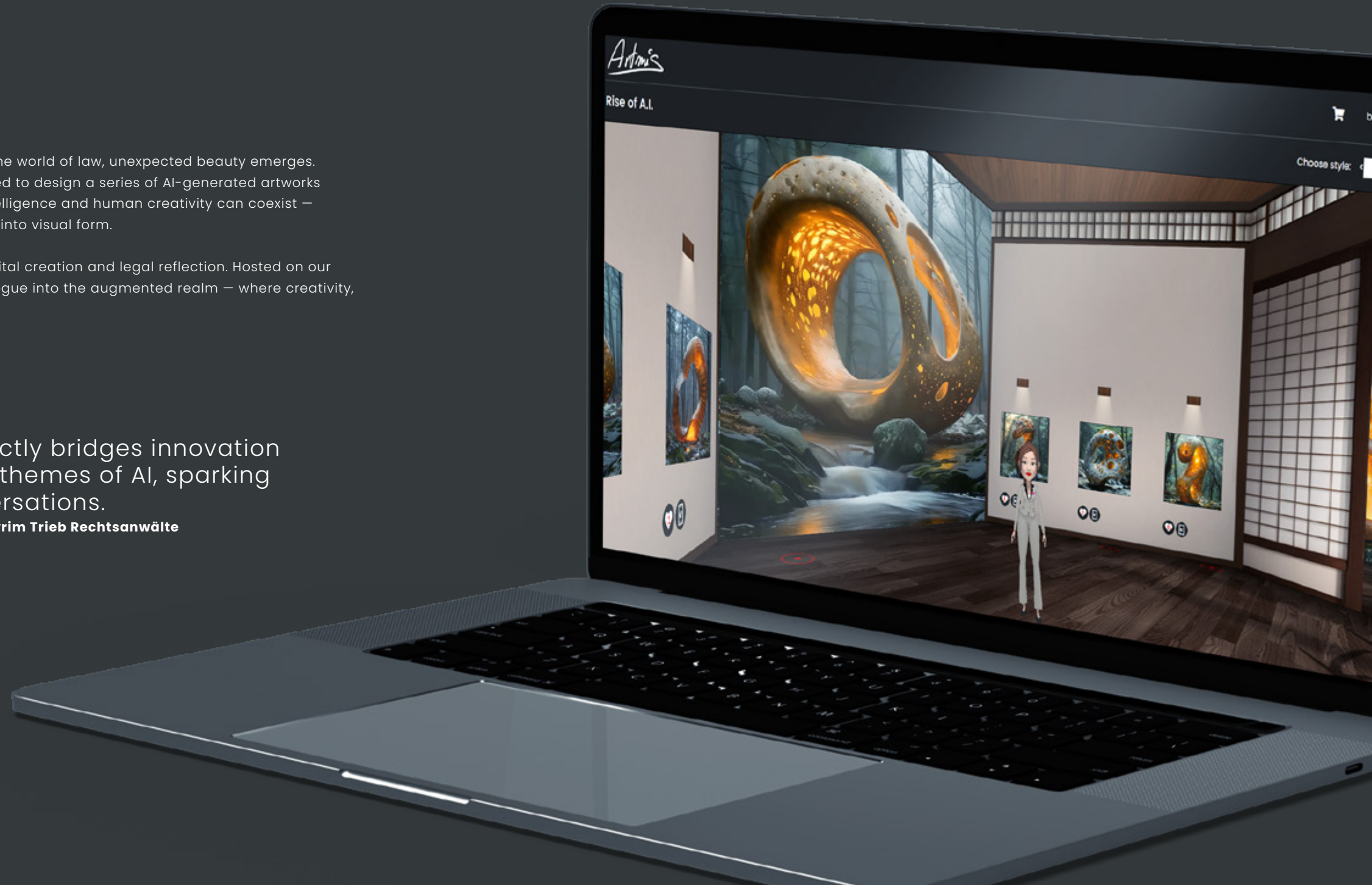
The result: a thought-provoking collection that blurs the line between digital creation and legal reflection. Hosted on our immersive platform, **Plato.Gallery**, the virtual exhibition extends this dialogue into the augmented realm – where creativity, technology, and law converge.



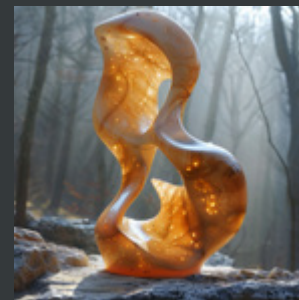
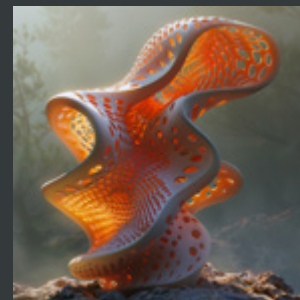
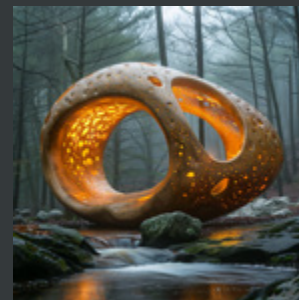
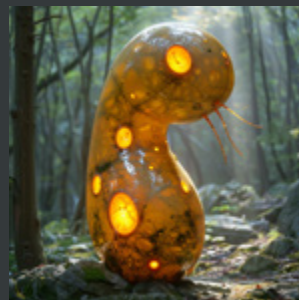
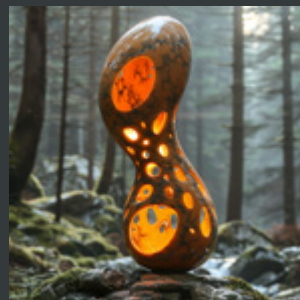
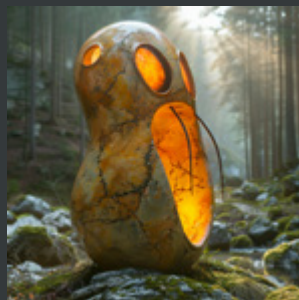
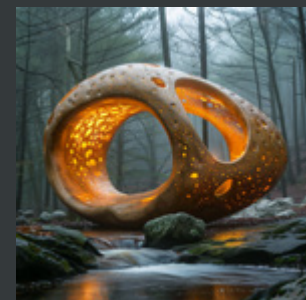
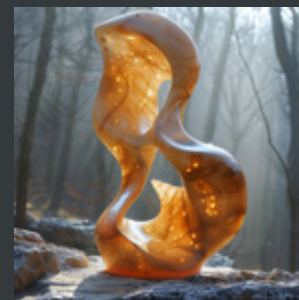
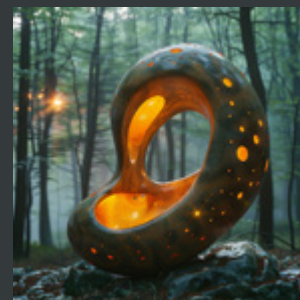
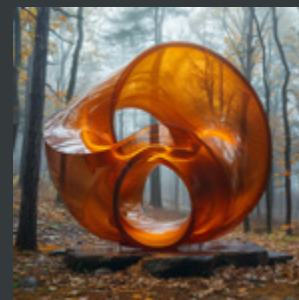
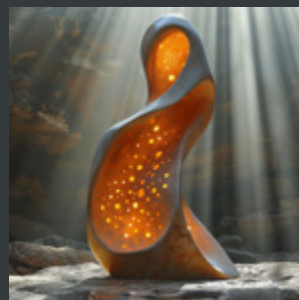
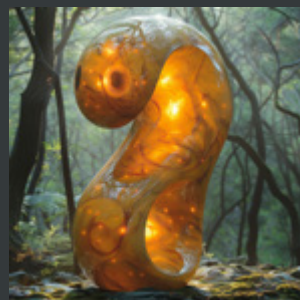
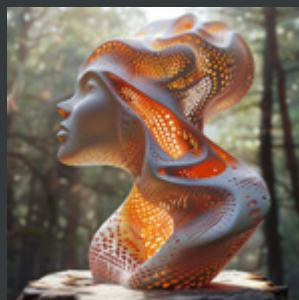
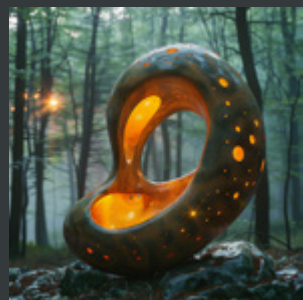
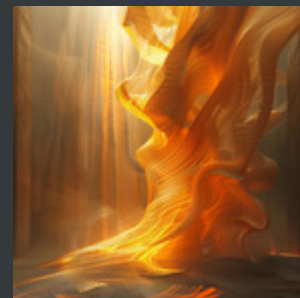
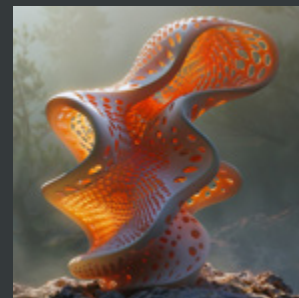
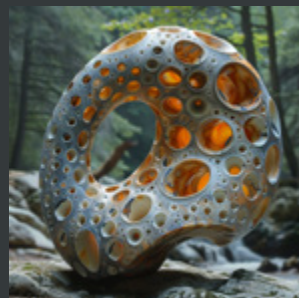
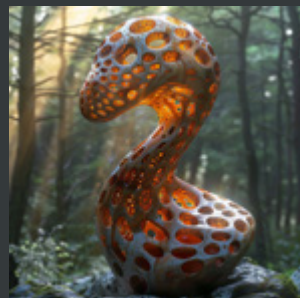
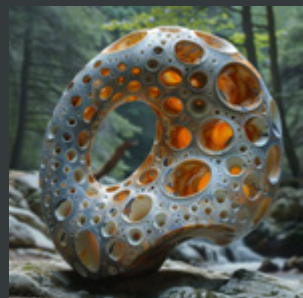
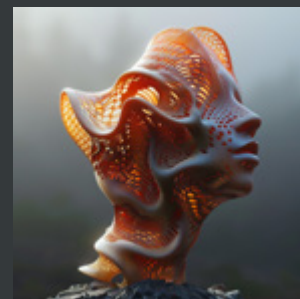
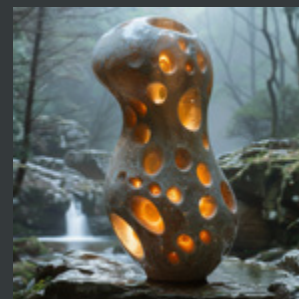
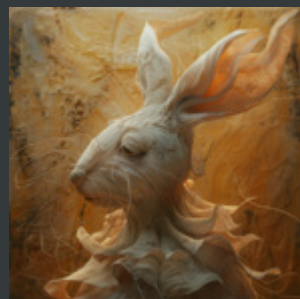
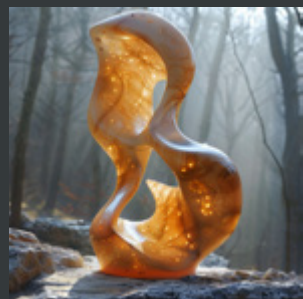
”

This artwork perfectly bridges innovation and the key legal themes of AI, sparking meaningful conversations.

Dr. Rainer Knyrim, Partner Knyrim Trieb Rechtsanwälte



EXPERIENCE
& EXPLORE

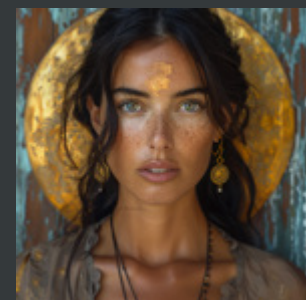
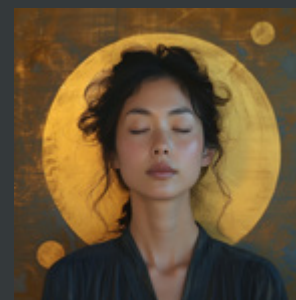
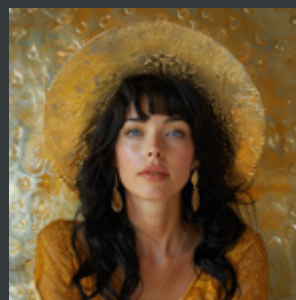
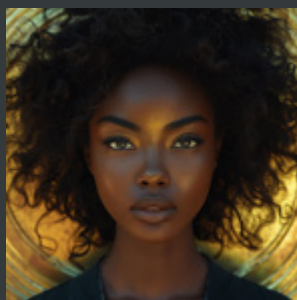
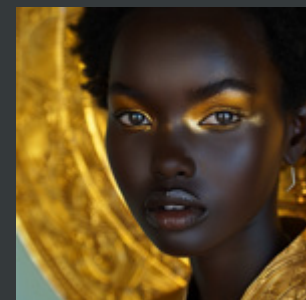
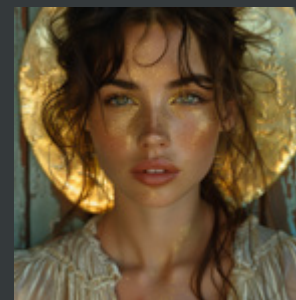
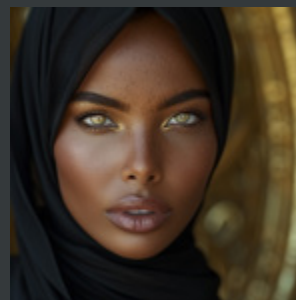
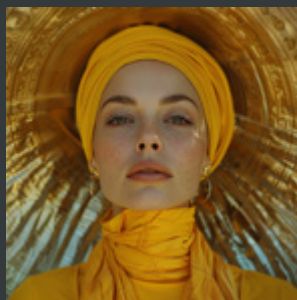
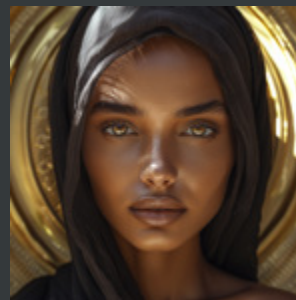
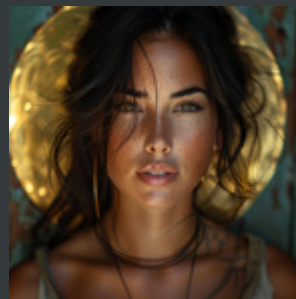
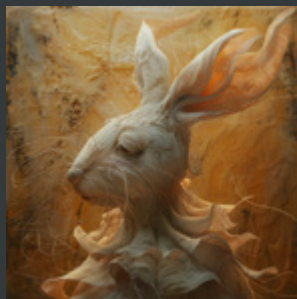


HOMMAGE AUX FEMMES

A DIGITAL TRIBUTE TO THE INNER WORLD OF WOMEN Before artificial intelligence, defining beauty was an ever-shifting pursuit — influenced by culture, emotion, and time. Is there truly a benchmark for what we call beautiful? Trained on the vast artistic legacy of humanity, AI now attempts to decode these nuances. It learns from millennia of creation, interpreting proportion, texture, and expression — and in doing so, it sometimes stumbles into clichés, echoing the very stereotypes it was taught..

With this collection, Artmis explores how AI perceives the feminine essence — capturing individuality, strength, and sensitivity in digital form. Presented on **Plato.Gallery**, the exhibition becomes an evolving conversation between human perception and algorithmic imagination, where art becomes both reflection and experiment.





EXPLORE
& AUGMENT

ARTMIS – WHERE CREATIVITY KNOWS NO BOUNDARIES

At **Werbeagentur dmp**, creativity is our purest form of exploration – a space where imagination and technology merge without limits. Through Artmis, powered by **Plato.Gallery**, we transform ideas into experiences where AI, AR/VR, 3D printing, and sculptural design are not just tools, but the foundation of new realities.

Free from commercial constraints, this work embodies the spirit of our agency – curious, bold, and endlessly inventive. Each creation invites you to see how art, design, and technology can truly intertwine to shape what comes next.

If you'd like to collaborate, exhibit, or explore new creative dimensions with us, I'd be delighted to hear from you.

Janine Wald

CEO, Werbeagentur dmp
j.wald@agentur-dmp.de
agentur-dmp.de • artmis.info

dmp
werbeagentur ■

Artmis